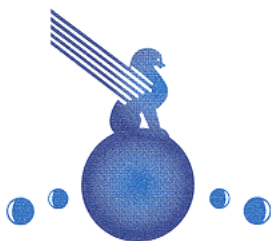


Corporate Headquarters
4065 Commercial Avenue
Northbrook, IL 60062-1851

Tel (847) 559-2000 Fax (847) 559-2095



Manufacturing Facility
9502 Bayport Boulevard
Pasadena, TX 77502

Tel (281) 474-6200 Fax (281) 291-6888

Old World Industries I Ltd.

An Old World Industries Company

ETHYLENE GLYCOL, INDUSTRIAL GRADE

Specifications

		<u>Limits</u>
Ethylene Glycol, wt.% (1)	min	99.0
Diethylene Glycol, wt. %	max	1.0
Water, wt. %	max	0.1
Color, Pt-Co Units	max	10
Acidity, as Acetic Acid, wt. %	max	0.005
Ash, g/100 ml	max	0.005

Test methods used for each specification analysis are available. Contact your Customer Service Representative to request copies.

References:

- (1) By Difference: 100.0% minus (acid plus water plus impurities as determined by Gas Chromatography).

The following physical parameters will be met if the product meets the specifications listed above:

Distillation Range, °C		
IBP	min	193
95 mis	max	200
DP	max	201.5
Specific Gravity, 20/20°C		1.1150 – 1.1156

Reviewed: September 1, 2004
Revision: September 1, 2004